

# ASSEMBLY INSTRUCTIONS KITCHEN COUNTERTOPS EN

TOP  
LAMINATE

DECOR  
TOP

TOP  
CORE

FENIX

EVORA  
QUARTZ

COSMO●LITE®

OBSIDIANA

EVORA  
GRANITE

EVORA  
CERAMICS

DEKTON

INOX

CORIAN

GLASS

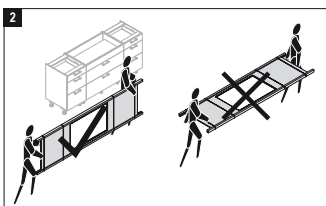
**1.** First check that the base cabinets are perfectly flat and level, and level out where not.

**2** Check whether the countertop will be adequately supported in all places. Make support bars when needed. They are particularly important for thin countertops, full corners and dishwashers.

Assembly requires (at least) two people, including a professional technician with experience.

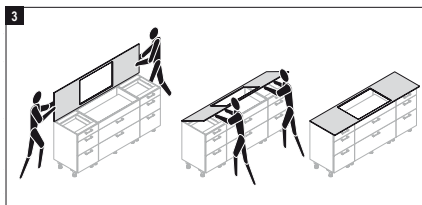


Keep the countertop in its packaging as long as possible and always carry it vertically.



Remember not to place the countertop under tension under any circumstances, due to risk of breakage.

**3** Always place a countertop upright on the base cabinets, then gently slide it backwards while lowering the front.



**4** If there are several tops\*, push them together very carefully and adjust them so that the top is flat and the tops are sufficiently far apart from the cabinets. To be sure, measure the overhangs to make sure they are the same everywhere. Then slide the tops apart so that the ends are easily accessible. Thoroughly degrease the contact parts with acetone. Cover the countertop surface with tape to prevent silicone sealant from getting on it. Then coat one of the contact surfaces with silicone sealant and press the tops together.

For TopLaminate, DecorTop, TopCore and Fenix: use the supplied corner connection kit. The instructions for this can be found in the packaging.

**Important:** Joint the tops on the cabinets (i.e. not while standing next to the kitchen). For cabinets with a closed top, first make the necessary holes so that the connection holes are accessible

For TopCore and Fenix10: Place the lamello without glue in the recesses provided and slide the parts together.

Then remove the excess silicone sealant and any sealant residue. Finally, remove the tape and allow the sealant to dry.

Remove any sealant residue immediately after assembly, as these spots are difficult to remove later. On structured surfaces, sealant is particularly difficult to remove. You can use acetone, white spirit or silicone remover for this purpose. When doing so, do not rub the seams as the sealant needs about 24 hours to cure.

\*Tops of Corian have the option to be glued almost seamlessly. This requires specific assembly by a specialized technician. If this is desired, the do NOT joint the worktops as described above.

You can reach the service department via email [dekkerservice@dznet.nl](mailto:dekkerservice@dznet.nl) or call +31(0) 180-630976

# ASSEMBLY INSTRUCTIONS KITCHEN COUNTERTOPS EN

**5** Always secure the tops to the carcass using a few dabs of sealant or by screwing. Before screwing, pre-drill the top with a wood drill bit 3-5 mm deep to prevent cracking. Use a drill stop for the drilling depth to prevent damage. Only attach the back wall to a straight, flat, dust- and moisture-free wall using vertical sealant beads for air circulation.

For solid worktops (10 mm) of TopCore/Fenix10, it is best to use special metal screws with cylinder head M4.2 x 25 din 7981.

For mounting, use (acid-free) adhesive sealant. Please also note the following:

- > do not glue over wallpaper (it may come off).
- > the humidity in the wall should be below 2%.
- > fix/stamp the rear panels until the sealant has dried (especially for large areas and if there is tension in the rear wall). But definitely do not slide the panel or lift it over an unprotected countertop!

For rear panels of TopLaminate/DecorTop/Fenix09, we recommend using Hybrifix 302 (definitely not Polymax).

If you are using a finishing profile between the worktop and rear panel, make sure you seal it properly so that no water gets between the profile and the rear panel or countertop.

**6** When installing side panels, first lay the countertop on top of the cabinets. Then place the side panels against the kitchen cabinets. Screw or seal the panel through the inside of the cabinet. Freestanding side panels can be glued to the underside of the worktop with silicone sealant. If necessary, seal the seam between side panel and top with silicone glue.

For installation of our sinks, please refer to our installation instructions for sinks, see [www.dekkerzevenhuizen.com/installation](http://www.dekkerzevenhuizen.com/installation)

If a tap hole is drilled or other adjustments to the worktop are necessary, take the necessary precautions:

- > Always work the worktop in/on a well-ventilated area (patio, balcony etc)
- > Use source extraction on machine equipped with Hepa/microfilter
- > Always wear respiratory protection, safety glasses and hearing protection.



Additional safety instruction when working on (composite) stone:

- > Use water cooling if possible to prevent dust formation.
- > Always wear personal respiratory protection with a suitable particle filter (type P3 according to EN143).



## Assembly video

[www.dekkerzevenhuizen.com/installation](http://www.dekkerzevenhuizen.com/installation)



## More information!

Want to learn more about maintenance, cleaning tips or order professional cleaners? Then visit: [www.dekkerzevenhuizen.com/maintenance](http://www.dekkerzevenhuizen.com/maintenance)



Unpack the top only after checking it for color, size and overall appearance. Report any imperfections- do not place the countertop.



Do not stand or sit on the countertop.



Protect the surface of the of the top during finishing.



Always support a thin kitchen countertop always and all kitchen countertops with heavy appliances and a heavy sink.



Under no circumstances should the top layer be sanded or polished further to avoid visible differences in surface gloss.